

PRODUCT GUIDANCE



This document is intended to provide guidance on fitting, removing or operating a product.
Any work should be carried out by a competent individual, adhering to health and safety guidelines and wearing the correct PPE.

REMOVAL OF FRONT MARKER LIGHT

This instruction is a guide to remove and change the front marker light used on the following ranges:

Alliance, Alliance SE, Advance, Advance II, Autograph, Autograph II, Approach Compact



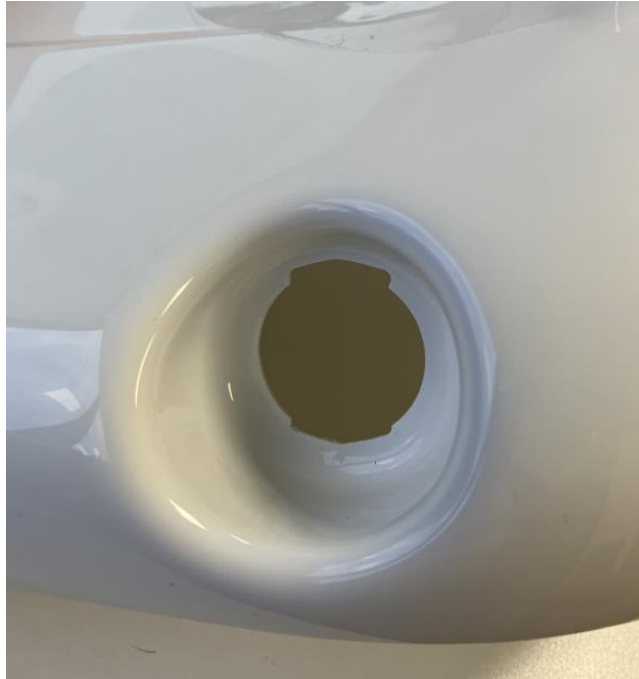
The part used is PRIMA part number 1170079, images below:



PRODUCT GUIDANCE



The corner pods have a hole cut out to match the shape of the light fitting as shown here:



To remove the light use a small flat head screwdriver to gently prize the light forwards.



PRODUCT GUIDANCE



Applying a small amount of pressure to the tab at the top of the light, you should be able to release the light from the hole:



PRODUCT GUIDANCE



You can now remove the light sufficiently to access the spade wiring connectors behind.

